



Claxton & Sand Hutton Parish Plan 2008

Claxton & Sand Hutton Logo



Claxton & Sand Hutton Logo designed in 1999 by Bill Heath to symbolise the connectivity and joint workings of the two villages. The War Memorial was used as the central point with the road connecting the two villages. Adopted by the Parish Council in 1999

Index

	Page
Foreword	5
Introduction	6
Snapshot of the parish	8
Consultation process	10
Photographic Competition	12
Issues raised in the consultation process	18
Road safety and speeding traffic	
Paths for pedestrians and cyclists	
Building development	
Recreation and other facilities for children and young people	
Village appearance and maintenance	
Transport	
General community development	
Leisure and interest groups	
Walking and cycling for recreation	
Footpaths and Cycle Tracks - proposal for action	
Green energy and recycling	
Services and support for elderly people	
Promoting local businesses	
IT and communications	
Heritage protection and preservation	
Miscellaneous	
Preparation of the action plan	28
Action Plan	30
Location Map	34
Acknowledgements	35

Aerial View

Aerial view of Claxton & Sand Hutton



Foreword

Over the years more and more emphasis has been placed on the importance of Parish Planning.

The documentation received by the Parish Council from district level, county and indeed national government makes frequent reference to Parish Plans and their part in helping villages like ours influence decision making and determine their future.

After holding public meetings to ascertain support for the process of producing a plan in this parish, a working group was formed and a lengthy period of consultation began.

The opinions of all the residents of Claxton and Sand Hutton are important in this process and everything has been done to encourage full participation.

We are at the end of that consultation period now and here is your Parish Plan.

Many ideas were put forward; some practical, some fanciful and some quite complex and expensive to facilitate. We cannot promise that every aspiration will come to fruition but we will continue to do our best to make sure the voices of Claxton and Sand Hutton residents are heard and give support to the views expressed in your Parish Plan.

Viv Tidball

Chairman, Claxton and Sand Hutton Parish Council



Introduction

Government information about the merits and value of parish planning, taking place across the country, was published and disseminated from time to time over a number of years before Claxton and Sand Hutton decided to participate in the process. Enthusiasm for having a plan had been shown at a public meeting held some years ago but no-one had come forward to take it on and make it happen. Towards the end of 2006, the parish council was finally persuaded that the process of parish planning and its various outcomes would be beneficial for our parish. It was hoped that it would be particularly helpful with regard to negotiation with the local authorities for facilities residents want such as footpaths, recreation spaces for children and improved road safety features. The officers of the various authorities having always told us that a groundswell of public opinion in favour of a particular course of action might influence their decision making was a very persuasive factor. The parish council was supportive of producing an action plan to inform its own agenda and encourage involvement by the wider community.

Funding for the phase of the parish planning process in which we have participated was about to come to an end in spring 2007 when we submitted our request for support. However, our application was successful and significant funds were made available to us by the Yorkshire Rural Community Council. These funds have been managed by John Thompson, clerk to the parish council, and used to pay for the materials used in the process of consultation and communicating with all residents of the parish leading to publication of the final document and action plan.

Needless to say, a huge amount of work has been put in voluntarily by several people who joined the parish plan working group and have seen the project through: Viv Tidball, Bill Heath, John Edmonds, Jo Wheldon, Anne White, Joy Pearce, Sue Sessions, Mike Rickleton and, in the early part of the process, David Brewer, Paul Wood, David Greenway and Mike Bewell. We have been well supported by Maggie Farey of the Yorkshire Rural Community Council and by her colleagues, especially Amy Thomas. We have also been grateful for the support and enthusiasm of residents of the parish and for their willingness to respond to our requests for ideas, comments and proposals for action in the villages. We hope the finished plan accurately reflects their views and concerns.

The community has been consulted in a number of ways over the last year. Two public meetings were held in the village hall in the early stages of the process, attracting more than 50 residents on each occasion, and two major exhibitions, to which everyone was invited, later on. Regular newsletters have been delivered to every household and sent out on the community email service by Bill Heath. Copies have been pinned on notice-boards in each village and suggestion boxes installed alongside for residents to provide feedback. A questionnaire was compiled and delivered to every household in the summer of 2007 inviting comments and seeking factual information about aspects of residents' lives in the villages. Our return rate for completed questionnaires was 50%, a pretty good response rate in the context of such surveys according to the market research experts. Invitations were extended through working group members to village organisations and institutions (gardening club, children's nursery, Sand Hutton School, book groups, etc) to contribute their views.

Informal contact was made with many individual residents who offered their comments readily and, occasionally, forcefully. Children and young people were encouraged to give their input and think about the villages in which they live through two competitions, building models of "My House" at the primary school in summer 2007 and being issued with a disposable camera to take photographs of "My Village" in February/March 2008. Both were enormously successful, attracting entries from almost every child in the parish.



Introduction

The following timeline summarises the sequence of events leading to the process described in more detail in the section on Consultation.

December 2006/January 2007

- Initial meetings with Maggie Farey YRCC and discussion in the Parish Council

February 2007

- Successful application for funding from YRCC and small grant from the funds of North Yorkshire County councillor Clare Wood

21 April 2007

- Launch meeting held in the village hall and a timetable agreed for completion of the process and publication of the plan

28 April 2007

- YRCC organised a parish plan training day at Staxton which was attended by Helen Wood, Viv Tidball, Anne White and David Brewer

May 2007

- Working group membership was established following expressions of interest at the launch meeting and initial discussions with residents; a constitution was drafted and agreed

Regular meetings of the working group have taken place throughout the process, at least once a month, and more frequently at key times when preparing for the major survey, exhibitions and presentations of findings.

Individual members of the working group have put in a huge amount of work and voluntarily given much of their time for the last 12 – 15 months to deliver this plan and proposals for action on schedule, as proposed in the initial timetable for the process.



Snapshot

A constant refrain during the period of consultation for the Parish Plan was, "please, don't change anything in Claxton and Sand Hutton". As was said in the foreword to "Reflections", the superb book published for the millennium celebrations in 2000, "the two villages, set as they are in wonderful Ryedale countryside, have largely retained their character and way of life amidst the constant change which has affected our larger towns and cities." Mentioned in the Domesday Book and with evidence of activity from the Viking era, these two settlements, built largely around the farming community, have a very long history of co-operation and mutually supportive existence. Long may they continue!

The parish of Claxton and Sand Hutton is situated a mile or so to the east of the A64 trunk road, 8 miles north east of York, about 4 miles from Stamford Bridge and 10 miles from Malton. A handful of busy farms surround the villages with much of the land in the parish being owned by the Church Commissioners. The two villages themselves are similar in size in terms of their number of households though housing in Claxton is more dense with properties concentrated in the Main Street, Whinny Lane and Greenhills whereas Sand Hutton is more sprawling with significant numbers of houses on Main Street, Stamford Bridge Road, Upper Helmsley Road, Hall Drive and Sand Hutton Lane. The villages are separated by a stretch of unrestricted road about a mile in length which, unfortunately, creates something of a gulf between the two, being rather difficult to bridge without resorting to driving as there is no footpath. For the small number of parish residents who live in properties west of the A64, around Claxton Hall, the barrier to involvement in village life is even greater.

On a clear day the Yorkshire Wolds and the North York Moors are visible from the high spots in the parish and the surrounding area has many beautiful trees and woodlands. The villages are surrounded by mostly arable land, with some used for livestock, farmed by tenant farmers who have also diversified into market gardening, livery stabling, touring caravan parks, etc. The central, older parts of each village are designated conservation areas.

Just over 350 people are on the electoral roll and an ever increasing number of children takes the population to well over 400. Of those who returned their fact finding questionnaires in August 2007, almost 50% of the adults in Claxton described themselves as retired whereas only c.30% of those in Sand Hutton did so. Twice as many Sand Hutton residents stated they were in full-time employment as Claxton residents. The mix of economic activity clearly will vary over time but it is probably fair to say that the villages have a relatively high proportion of middle aged and older residents. For more information on the numbers of children and young people in the parish, see Jo Wheldon's chapter on the issues regarding the lack of provision of recreation facilities on page 20 of this publication.

There are no shops, pubs or other commercial services in either village although various products such as milk, newspapers and fish are sold and delivered direct to households and a number of businesses (building, design, consultancy, IT, music publishing, alternative therapy, etc) operate from premises in the villages. Stamford Bridge has medical and veterinary services, a bank, shops, a post office, etc but has no public transport from Claxton or Sand Hutton. Malton and York are the destinations of most residents for their everyday needs and there is a limited bus service at peak times.



Snapshot

The Anglican community is strong and St. Mary's Church, Sand Hutton is at the heart of a ten church group of parishes currently led by the Revd. Jeremy Valentine. Sadly, the Methodist Chapel in Claxton Main Street closed for worship at the end of 2007. Sand Hutton Church of England School provides primary education for local children and occupies a prime position in the Main Street. The architectural style and character of the building has been well maintained and enhanced by recent extension and the school provides a happy and safe environment for the children. Older children attend a range of state and independent schools and colleges, mostly in the city of York.

An attractive and well maintained Village Hall is located in Sand Hutton. This is the venue for a whole host of activities including a regular pre-school playgroup, the annual village produce show, indoor bowls, social events and entertainments, clubs, meetings, fund raising events, private functions, etc. The hall is well equipped with a good kitchen, up to date loos, reasonable disabled access and so forth but the Village Hall committee faces the constant challenge of raising funds to cover maintenance, running and improvement costs. It is always open to ideas and suggestions for events and activities residents would like to see in the villages and for further ways of bringing the community together.

Whilst being wary of sudden changes and disruption in its way of life, the parish will see developments in its demography through population growth, building, economic activity and natural environment in the years to come as it has done over centuries past. The parish plan is a means of expressing ideas about evolution and growth which are compatible with residents' views about their home and community:

- *"We have lived here five years and like the village very much"*
- *"The main reason I choose to live in Claxton is the rural peaceful pleasant environment existing today. Any proposed change should be done with sensitivity to avoid changing the village adversely and urbanising it"*
- *"... Sand Hutton is a wonderful place to be!"*

Photographic display day at the village hall



Consultation

This section describes in detail how the community has been consulted and lists the various opportunities residents have been given to contribute to the compilation of the finished plan and proposals for action. It is the residents' plan for the parish of Claxton and Sand Hutton not the views of the working group or parish council.

January, February and March 2007

Discussions with the Parish Council, neighbouring parishes, representatives of planning-related departments at Ryedale District Council, YRCC and members of the parish interested in working on the parish plan process

12th April 2007

"2017 - Can you imagine living in Claxton and Sand Hutton in 10 years' time?"

Initial leaflet produced telling residents about the parish plan and inviting them to the meeting to launch the process of consultation; delivered to every household in the parish; also circulated via the community email service and pinned on village notice-boards

21st April 2007

Launch meeting in the Village Hall (over 50 people attended and more, who sent their apologies, submitted comments in advance of it)

10th May 2007

"Add your voice to plans for the future of our villages"

Leaflet delivered to all households re-iterating the purposes of the parish plan process and inviting attendance at the open meeting on 16th May

16th May 2007

An entertaining and productive "Ideas" event with post-it notes etc in the Village Hall plus a further opportunity for people to volunteer to be involved in the work of parish planning. Like the launch meeting, this event was very well attended by more than 50 residents

7th June 2007

"Latest news from your parish plan working group"

Newsletter about parish plan progress delivered to every household and suggestion boxes installed next to the notice-boards in both villages

July 2007

"What's happening? – here are just a few of your neighbours' ideas"

Published and delivered a newsletter reviewing progress to date, giving examples of ideas put forward, inviting comment and advising of forthcoming questionnaire; residents invited to see full details of ideas to date, available in paper format or by email

July 15th – 20th 2007

Questionnaire distributed to every household seeking comments and factual information about various aspects of their lives in the villages



Consultation

August 2007

Material from returned questionnaires (c.50% return rate) recorded in spread sheet and typed up under various headings for analysis

August 2007

Preparation for exhibition at Village Show with results of survey illustrated and available for inspection by all residents plus leaflets produced as handouts and posters

1st September 2007

Major parish plan exhibition at the Village Show; steady interest from residents throughout the afternoon with a fun jigsaw competition and "marking your house on a map" exercise plus parish maps, photos, posters and handouts; additional comments and feedback recorded

September 2007 onwards

"What ideas and suggestions did you and your neighbours put forward in the recent household survey? – here are the top five"

Parish Plan display on notice-board in Village Hall and copies of newsletters, as always, on both village notice-boards

October 2007

Break! The working group decided it needed to take a break from planning and catch up on other things!

11th November 2007

"What's the big idea?"

Newsletter produced and delivered to every household, inviting comment on ideas to date

November 2007

"Photography competition"

Preparation for the photographic challenge for children and teenagers in the parish; announcement delivered to every household

January 2008

Photographic competition launched; 57 disposable cameras distributed

February 2008

"What's the plan?"

Newsletter distributed to all households with draft of proposals for the Action Plan; comment and feedback invited. Also included invitation to the exhibition of photographs and "tea party" where there would be a further opportunity for views to be recorded.

March 2008

Exhibition of photographs by children and teenagers in the Village Hall on two afternoons, 8th and 9th March, with prize giving by Mike Martin Member Royal Photographic Society (Sand Hutton), refreshments and further opportunity to comment on proposals for inclusion in the action plan; significant number of comment forms returned on the day and in following weeks. Well over 100 residents visited the exhibition over the weekend.



Photographic Competition

As a working group we wanted to get contributions from all age groups in the Parish. As engaging with the children and young adults was going to be tricky, I came up with the idea of a photographic competition, all using disposable cameras so it was a level playing field.

The theme was to be kept simple, "My Village", each young person was to be given a camera and it was entirely up to them what they photographed. 60 cameras were purchased and 57 distributed, nearly 100% take up! The buzz from the youngsters in our community was quite uplifting. We paid to have the cameras developed; prints and on CD.

The judging was carried out by Mike Martin, a member of the Royal Photographic Society, who happens to live in Sand Hutton. The task was enormous with over a thousand pictures to look at. Mike was very impressed with the quality of the entries and chose the winner from each age group and the best photo of each entry.

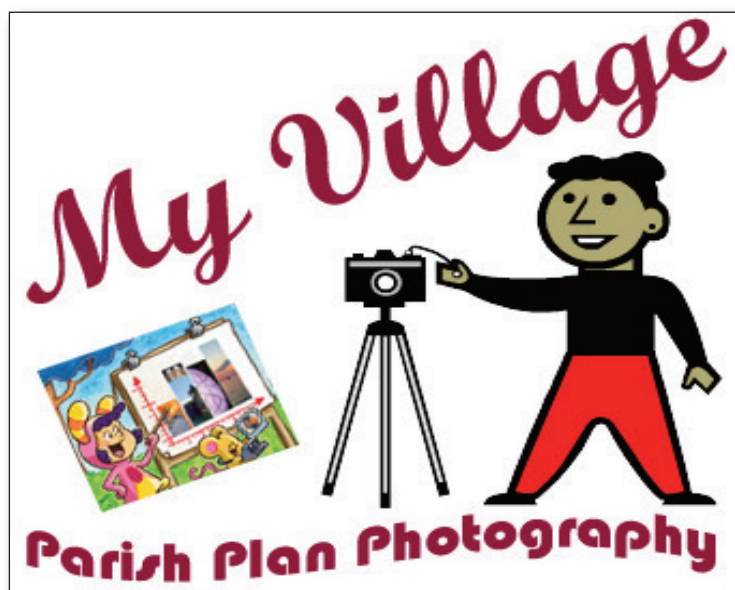
Jo Wheldon and I mounted the winning pictures and the best from each competitor. Bill Heath had the time consuming task of putting all the electronic images on computer to form a rolling presentation of all the entries.

The exhibition was mounted and displayed in the Village Hall, the stage was set for the rolling display and many buns and cakes were baked... On Saturday 8th March the Hall was packed with excited families, watching the screen, looking at the mounted exhibition, and eating cakes! The results were announced by Helen Wood and the prizes given by Mike Martin.

This was a lot of hard work but watching the presentation and seeing the excited faces of the children and young people made it all very worthwhile. There have been numerous requests to do it again next year!

Thanks go to Jo Wheldon, Bill Heath, Mike Martin and all the cake bakers, and to the 53 exhibitors.

Viv Tidball



Winners & Runners Up



Mike Martin with the winners and runners up of the photo competition

Age Group	First Place	Runners Up
2 – 6 yrs	Georgia Legg	Nat Esler
7 – 10 yrs	Alice Holmes	Ed Thompson
11 – 14 yrs	Victoria Argile	Lois Pacitto
15 – 18 yrs	Charlie Bayley	Robin Bayley

Claxton & Sand Hutton

Parish Plan 2008

Winners & Runners Up



Claxton & Sand Hutton

Parish Plan 2008

Winners & Runners Up



1st 7-10 Alice Holmes

Runner Up 15-18 Robin Bayley

Claxton & Sand Hutton

Parish Plan 2008

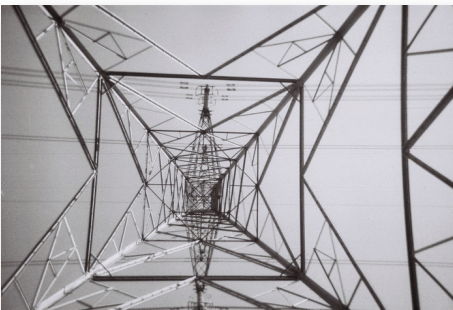
Photographic Competition



Claxton & Sand Hutton

Parish Plan 2008

Photographic Competition



Issues raised in the consultation process

ROAD SAFETY AND SPEEDING TRAFFIC

Twice as many comments as on any other item were recorded on this issue; over 100 separate points were made, more than half on the subject of how to control and curb speeding, especially by HGV's and other commercial traffic, through and between our villages

The issue on which almost every respondent commented, whether in meetings, through the questionnaire, in conversation, in letters or on other occasions when the parish plan was under discussion, was road safety and, specifically, how we can curb the speed of traffic passing through our villages. Fast traffic arrives in each village from a number of different directions and views were expressed for and against the use of chicanes, speed humps, etc on these approach roads. However, the majority were in favour of excluding them and preserving the rural quality of the environment. There was considerable enthusiasm for the installation of flashing signs to warn drivers when they are breaking the speed limit though how many such signs might be needed, where they would be located or how they would be paid for were not questions that were raised. There may be other, less expensive ways of alerting drivers to the fact that they are entering residential areas with speed restrictions and getting them to slow down. Suggestions included road marking to create the sense of narrowing of the carriageway and enhancing the village entrances with gates or pillars. These ideas need pursuing in more detail and residents will need to think hard about what they would like to see done and what contribution they would be prepared to make to achieve the improved levels of road safety they want.

Some proposals for improving road safety need to be referred to Ryedale District Council, North Yorkshire Highways department and the Highways Agency. We should expect a prolonged battle with them for planning permission and funding. They acknowledge publicly that they will only be persuaded that action is required *following* fatal accidents on the roads concerned despite the obvious need for prevention! We can have little impact on the political will to make the A64 a dual carriageway but we can ask for attention to be paid to the dangerous junction to the north of Claxton and to the need for a refuge or other safe means of crossing the road to reach Claxton Hall and the residents of other properties in that part of Claxton.

A number of smaller scale improvements could be implemented at little cost if appropriate planning permission were given – a mirror for drivers emerging from Hall Drive to see traffic turning into Upper Helmsley Road from the Main Street; an indication of the right of way over the Stank Bridge by the Village Hall to avoid "head to head" collisions. Other matters of concern are those we should all pay attention to – parking sensibly and not causing obstruction in the main streets or on the pavements of both villages; slowing down and waiting rather than driving at speed onto the verges when driving, or faced with, wide vehicles.



Issues raised in the consultation process

PATHS FOR PEDESTRIANS AND CYCLISTS

46 residents commented on the importance of providing more footpaths within and between the villages. Only two respondents suggested they were not keen to see a path of any kind between Claxton and Sand Hutton.

Linked to the concerns about road safety and speeding traffic were the very strong feelings conveyed about the lack of provision of footpaths both within the villages at various points and between them.

There were mixed feelings about the installation of a kerbed, tarmac path along the road between Claxton and Sand Hutton but the majority wanted some kind of off-road option to enable all residents, especially children and less agile folk, to walk safely to and from school, the Village Hall, the church and friends' homes elsewhere in the parish. It is hard to square the public rhetoric about climate change, reducing carbon footprints, combating obesity, children's health, etc with the intransigence of the local authorities who persist in linking the need for footpaths with the prevalence of fatal accidents. Without a footpath, many people are deterred from taking the simple, healthy option of walking the short length of open road (less than one mile) separating our two villages and we are all penalised for having the common sense to minimise the risk of accidents by avoiding walking on the road unless absolutely necessary.

The lack of footpaths in some parts of Sand Hutton was also identified as a problem; people walking to the Village Hall from the church or to the school from upper Helmsley Lane frequently find themselves sharing the carriageway with speeding motorists. Another comment was that the public bridleway from Sand Hutton to Stockton on the Forest should be better maintained and give access to their shops and pub as well as quieter routes into York for cyclists.

BUILDING DEVELOPMENT

This topic attracted comment from 44 households. 100% were adamant that the villages should remain "rural" and have restricted development but 30% of them were in favour of the building of "affordable" homes where feasible. Over 10% of comments related to the inadequacy of the existing drains and sewerage system

Residents feel very strongly about the building of houses in the villages. Almost without exception, there is no wish to see development outside the existing village boundaries and a minority would like no further building at all, especially through the division of gardens and land belonging to existing properties. However, there was a strong feeling that, where suitable land exists, consideration should be given to the building of a number of smaller properties that would be in the price range of younger families wishing to move to or remain within our community.

Where building was approved it should meet the most stringent eco-friendly standards. It should also take into account the present inadequate drainage and sewerage provision, as evidenced in the recent flooding of both villages. The local authorities should be pressed for improvements in this area whether or not new building is approved.



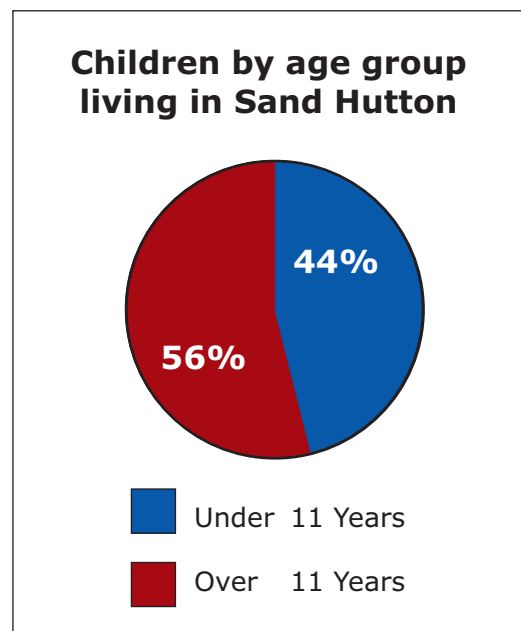
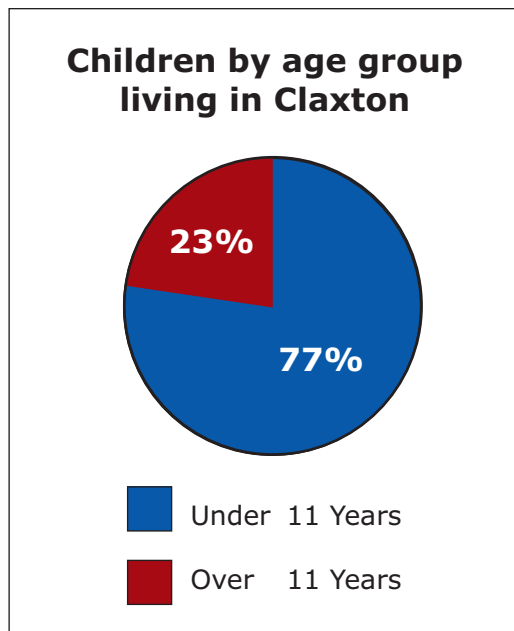
Issues raised in the consultation process

RECREATION AND OTHER FACILITIES FOR CHILDREN AND YOUNG PEOPLE

50 people, including a number of children, recorded their views about the need for better provision of facilities, 60% commenting specifically on the urgent need for an outdoor play area in one or both villages

The Current Situation

A surprising number of youngsters live in Claxton and Sand Hutton. There are between 70 and 80 children up to age 18 living within the parish, roughly a fifth of the population. Overall, numbers are split evenly between the two villages and their outlying farms; however, there is a difference in the age range of children in each village, as the charts below show:



We are fortunate to have good educational facilities for pre-school to 11 year olds. 23 children from the parish go to Sand Hutton Primary School and recently, S & Js nursery opened in Sand Hutton village hall, offering daily pre-school education. Parent and toddler sessions are held weekly at both the village hall and the school. It is notable that many local children attend different schools, primary and secondary, in and around York; therefore have little contact with other young people in their village.

Unfortunately there is no outdoor play area for children in either Claxton or Sand Hutton. In the past, the school playing field has been available for sports activities, but currently the Local Education Authority are unwilling to let local children use it on grounds of 'health and safety'.

There is a weekly ballet and tap dance class in Sand Hutton village hall, but no other regular community activities are aimed specifically at young people. The nearest youth group for older children is Derwent Young Farmers Club, open to all youngsters, meeting at Gate Helmsley village hall. When activities are organised, such as the recent photography competition, children are enthusiastic and keen to take part.



Issues raised in the consultation process

Issues raised

Fifty people, both adults and children, expressed serious concern at this lack of provision. By far the biggest issue was the lack of a safe area for play and a desire for a community playground. The benefits of having a play area for children would be great. As well as providing a safe place to exercise out in the fresh air, it would mean children could socialise with others in their community; and it could provide a meeting place too, for adults with young children. In Claxton a number of respondents suggested the village green as a suitable place. One resident was totally against using the green for play, and there were general concerns about its proximity to a busy crossroads and lack of fencing. Examples of residents' comments include:

- *A playground would be great idea if sited in an amenable plot for all – Safety being the main priority*
- *What's the problem with the green becoming a playground? Would children be better in front of computers and TVs?*
- *The Play area: the park will be a great idea for kids of the future; as for the kids now I am sure they will love it... These are some of the things we want: swings for the younger kids, swings for the older kids, roundabout, slide, basket ball hoop, seesaw, climbing frame...I hope you will consider this, it is not just me that wants this but all the other kids in the village*

Additionally, respondents were keen for village activities and clubs for teenagers, such as a youth club and games evenings, either in the school or at the village hall. It is clear from views expressed such as the following that we need to provide opportunities to bring our young people together:

- *We should try to involve the young people in the village & village life. At present nothing much happens here that would interest them.*
- *Sand Hutton school – what can we do to bring it more into the heart of the community?*

Vision/actions for the future

The first step is to establish a group of volunteers, to explore options with landowners, funding bodies, local authorities, etc. for an outdoor play area to be created in Claxton and, possibly in partnership with S & Js Nursery, at the village hall in Sand Hutton.

One possible solution is to approach Sand Hutton School to explore the possibility of local children accessing the school playing field at weekends/during school holidays.

Additionally, the volunteer group should identify opportunities to provide youth activities within the parish, e.g. youth club/games evenings.

It is important that children and young people from Claxton and Sand Hutton are involved with the planning, organisation and development of the Parish Plan actions. They should certainly be represented within the volunteer group.

If you are interested in getting involved, please contact:

Jo Wheldon on 468186



Issues raised in the consultation process

VILLAGE APPEARANCE AND MAINTENANCE

43 residents expressed their concern as to how we should preserve the attractive appearance of our villages. For the handful of Sand Hutton residents who commented on street lighting under this heading, the jury is still out! Comments for and against were evenly matched.

We all agreed that we live in a very attractive, rural location with many lovely features. However, they will not remain lovely unless we care for them and are vigilant about their preservation and ongoing maintenance. A number of comments implied that "someone" should take on the task of looking after the villages – picking up litter, keeping focal points like the village greens and the war memorial in good condition, planting trees, stopping dog fouling, etc – "someone" should be every member of the parish! The parish council and local authorities are responsible for some basic tasks such as the cutting of grass on verges but everything else is probably down to **"US"**. Keeping Claxton and Sand Hutton the beautiful, peaceful rural villages we want them to be requires the commitment of all residents and the willingness of many of them to participate in voluntary groups to take action to preserve and protect them.

TRANSPORT

Over 40 respondents included comments on transport to and from the villages. More than half of them wanted to see the provision of bus services improved or, at least, maintained. All comments about the provision of secure bike parking at CSL were 100% enthusiastic

Many thoughts were expressed about the provision of public transport for those without cars or seeking alternative means of travel. The subsidised bus service linking York and Malton was praised and there were hopes that it might be extended to include destinations such as Monks Cross. Mixed views emerged about the merits of route-ing the Coastliner through the villages at some times of the day: a nice idea but probably not feasible given the size of vehicle involved and the economics of the detour from the point of view of the bus company. A suggestion that we should ask CSL to allow us to park bikes securely on their premises and make it easier for some residents to use the Coastliner service was greeted with great enthusiasm.

Some residents were keen to explore car sharing and the provision of lifts to people needing transport both on a regular and an occasional basis. Such a scheme could be facilitated by having an electronic message board or village website to request or offer such a facility.

GENERAL/COMMUNITY DEVELOPMENT

27 ideas and comments were received about how to foster community spirit. Approximately a quarter of them were in favour of a pub or shop opening in one of the villages and another quarter keen to see the village hall used as more of a community centre



Residents were keen to foster community spirit and while a pub or village shop could provide a regular meeting place it was understood by most that we were not likely to see such a business established in the foreseeable future. However, use of the Village Hall as an everyday meeting place was suggested (though currently not an option as the pre-school group excludes much other use in term-time) and several residents were keen to have an annual "party" for all residents such as a barbecue or barn dance.

Issues raised in the consultation process

LEISURE AND INTEREST GROUPS

27 comments were recorded, all in favour of more and new activities, even though the questionnaire results indicated that residents already engage in a bewildering array of leisure activities, from bee keeping to showing sheep!

Residents were full of ideas for recreation and social activities in the villages. Many groups exist already such as our highly successful gardening club, Green Finger Tips, the book groups in Claxton and Sand Hutton, the WI, the indoor bowls group, the church choir and Women in Harmony, but there seems to be enthusiasm for more with music, dance, film and natural history high on people's lists. Opportunities for the sporting interests expressed are limited by the lack of a playing field or other venue such as a large hall or a tennis court.

WALKING AND CYCLING FOR RECREATION

This subject got 23 responses. 100% of them were in favour of promoting use of off road/public footpaths and trying to persuade local landowners to allow more access

Many active residents, especially those with dogs or horses, would like to see opportunities for riding, walking or cycling on quiet or off-road routes. Despite being in the heart of the countryside, there seem to be more such opportunities in the city of York! Maps of public footpaths and rights of way are required and a project needs to be undertaken to clarify exactly where permission exists for residents to use paths and bridleways across the parish. Where appropriate, signs should be installed on the ground indicating the existence of such routes, and, where these have disappeared over time, they need to be reinstated.

Footpaths and Cycle Tracks – a proposal for action

In response to the interest shown in the questionnaire circulated round the two villages it is intended that a map, possibly in conjunction with the "Heritage Trail", (see page 26) should be printed showing footpaths, cycle tracks and permissible paths in the locality. These will be appropriately signed, surfaced where necessary and maintained either by the district council or by voluntary help. Research into making extended provision is to be investigated. Further research into providing information about the local flora and fauna could be compiled and added to our information sheet and web site on a regular basis. It is our intention to stimulate interest and awareness in the local habitat by involving all those who wish to participate. In this way, it is hoped, we can gain the maximum pleasure from our local provision.

Contact **Sue Sessions 468568** to help with this project.



Issues raised in the consultation process

GREEN ENERGY AND RECYCLING

This topic attracted 23 contributions with views roughly 50:50 for and against current options for energy generation such as wind turbines

A variety of motives appeared to prompt a significant number of residents to speculate on the possibility of establishing some kind of alternative energy system in the parish, achieving a reduction in its carbon footprint and reducing the cost of heating, lighting, etc to households. Many residents wanted to see a more general commitment to green energy and recycling but whether these wishes can be turned into realistic projects in the context of two small villages remains to be seen. Those with specialist expertise and knowledge are to be encouraged to explore feasible options for the future.

SERVICES AND SUPPORT FOR ELDERLY PEOPLE

17 people raised this issue with 100% of them in favour of being more vigilant and willing to address the needs of older people in our community

Claxton and Sand Hutton are fortunate to have a thriving community lunch group which provides a monthly lunch and social event for older people in the parish who would not otherwise get out and about and meet their neighbours. This is organised by Rachel Baker and a team of volunteers from both villages. Informally many residents keep an eye on their neighbours but it was felt that some more organised support might be helpful such as the provision of transport and lifts to village events as well as shops, doctors, hospital, etc and special social activities in which they could be encouraged to participate. A recent suggestion is for a "bibliotherapy" group to be set up with volunteers willing to visit and read to older people and those with limited sight.

PROMOTING LOCAL BUSINESSES

16 people raised this topic, all of them in favour of promoting and using local businesses and services

From residents' comments and responses, especially to the leaflet on local "shopping" produced for the first Parish Plan exhibition, it is clear that people are keen to encourage appropriate businesses operating in and coming into the villages, providing services to residents and keeping the community alive. Minimising the need for trips to distant shops and supermarkets and supporting local trades-people were high on residents' lists of preferred ways of living and consuming in a rural area



Issues raised in the consultation process

IT AND COMMUNICATIONS

16 positive suggestions were made, all related to the setting up of a community website and enthusiasm for exchanging and recycling goods and help

We are fortunate to have a variety of communication channels in the parish already – the Circular, the community email service, the village notice-boards – as well as the highly effective “word of mouth” but there was strong support for moving into the 21st century with a village website offering greater interactivity, a message board and scope for exchanges, eg. “*Plant sharing/produce sharing or exchange maybe twice a year - spring and autumn*”, recycling of possessions, mutual support and offers of help. Andrew Fawcett (Claxton) has already offered to share his expertise in web design but any other residents with relevant knowledge are invited to make themselves known to Bill Heath and help them complete the process of setting up a site.



“James and Lucy Fawcett of Kissthorn Farm were the joint winners of the children’s section of the jigsaw competition run by the Parish Plan organisers on Village Show day at Sand Hutton.

The jigsaw, created by John Edmonds of Hall Drive, consisted of a large map of the parish, mounted on board and cut into squares which were jumbled up, with the challenge being to recreate the map in the shortest possible time. It took James and Lucy just five minutes.

Winners of the adult section were Tim and Sara Sykes who are due to move into Sand Hutton later this year. Their winning time was three minutes twenty seconds. Well done to all who took part and enjoyed the exhibition as a whole.

Issues raised in the consultation process

HERITAGE PROTECTION AND PRESERVATION

Comments in the Questionnaire largely related to the chapels in Claxton which, sadly, are no longer "in play". However, great enthusiasm was shown for the establishment of a heritage trail around the parish.

Responses to the parish plan questionnaire included concern and interest in the need to create a record of local historic and other sites of interest. Some of these need protection and possible restoration.

Since the survey was carried out in August 2007, the two chapels in Claxton have both changed circumstances. With great regret, the chapel in Main Street has closed for worship and is to be sold by the Methodist Church with planning permission for residential use. The small chapel has been acquired by the Church Commissioners who own the surrounding land.

An open meeting was held in February 2008 inviting anyone to attend who wanted to be involved in a heritage project and, perhaps, lead to the formation of a local history group. Nine residents from the two villages attended this initial meeting and shared their reasons and particular interests with enthusiasm. Others are very welcome to join.

The group has considered ways of recording its findings from creating a Heritage Trail linking Sand Hutton and Claxton to having pages on a village website accessible to anyone.

So far, we have researched various issues and visited County Hall Northallerton to ascertain public rights of way on the latest maps of the area. We intend to walk the proposed route of the Heritage Trail in April 2008 and begin to record points of interest.

These will include:

- Sand Hutton light railway
- The route of the railway line
- The ruins of St. Leonard's Church
- The brick works, brick ponds and windmill remains
- Sand Hutton village school
- The site of the former Claxton school room
- The estate office of Sand Hutton Hall in Claxton
- Sand Hutton Hall's land agent's house in Claxton
- The two former chapels in Claxton
- Sand Hutton Hall and fire brigade
- The walled garden of Sand Hutton Hall
- The blacksmith's house and forge in Sand Hutton
- The well on Sand Hutton green

Use will be made of research already being carried out on the significance of field names and land use, aerial photography, historic maps, and the many railway enthusiasts in the area, including the creator of the model of Sand Hutton Central (from Middleton in the Wolds). Broadening the scope of the project to include the natural history of the parish is being considered, with a proposed record of the flora and fauna seen in the area over an initial twelve month period being established and monitored in years to come. What impact will climate change have on Claxton and Sand Hutton?



Issues raised in the consultation process

Miscellaneous

Several other comments were made which do not fall into the categories above. Two concerned the provision of services when problems occur – flooding, extended power cuts, medical emergencies and the need for defibrillation in particular. The parish council has drafted a contingency plan for necessary action to be taken and support made available in these and similar circumstances. It is currently being considered for approval by the local authorities. We hope that it will be in place very soon. Details will be kept by the Clerk to the Parish Council.

The remaining comments are included for the record:

- *The villages (sic) must be able to have things happen in it. It must be allowed to "live" and not go backwards*
- *A Council with political will?*
- *Quiet Sundays – discourage use of machinery*
- *Stop cold calling throughout the villages*
- *As I said at the first meeting of the Parish Plan. I am very concerned about the process of producing the plan. So yes I do have ideas about improving quality of life but as with all such ideas you might be collecting, I'd want to consider (a) The process agreement within the community. (b) The likely consequences of any idea in the things we already value*

Finally, some very wise words:

"We are sure many good suggestions have been made but feel it is important to concentrate resources on the few which are realistic and achievable"



Preparation of the Action Plan

The following text was published and distributed to residents during the latter stages of the consultation process for feedback and expression of support or otherwise; it was also available for those who attended the Photographic Exhibition on 8th and 9th March to read and complete as a questionnaire:

Road safety and speeding traffic

- *Flashing speed signs for 30 mph zones, eg those giving drivers' speeds and triggering a "smiley face" for drivers adjusting their speed appropriately, were the most frequently suggested solution. Other villages have raised their own funds for such signs. Would Claxton and Sand Hutton be prepared to do the same?*
- *Parish Council to give North Yorkshire/Ryedale Highways a summary of residents' proposals especially in relation to the A64, eg improve northern junction with A64 (dangerous corner and turn-off); provide footbridge or refuge for crossing the A64 to reach Claxton Hall from the end of Whinny Lane; establish right of way over the Stank Bridge in Sand Hutton*
- *Hall Drive residents to be given mirror for safe egress onto Upper Helmsley Road; planning permission may be required for its installation and a funding source identified.*
- *Enhance village entrances to indicate transition from open road to residential area*

Transport

- *Parish Council to communicate interest in improved bus service to Ryedale/Hutchinsons; residents were keen to retain Malton and York links but wanted occasional services to other centres such as Monks' Cross and Stamford Bridge*
- *Parish Council to negotiate with CSL for secure bike parking on their premises for residents wishing to cycle and then catch the Coastliner from the A64*
- *Car sharing scheme (see IT and Communications section)*

Paths for pedestrians and cyclists

- *Footpath between Claxton and Sand Hutton – Parish Council to continue dialogue with Highways, Ryedale District Council, local councillors, MP, et al*
- *Explore provision of a permissive path on land adjacent to road between villages with the Thompsons (bridle paths) and Church Commissioners*
- *Other off-road paths to remain on the agenda include one to the Claxton caravan site shop, one linking the church and village hall in Sand Hutton, and the possibility of improvement to the public bridleway from Sand Hutton to Stockton on the Forest*

Building Development

- *Restrict development to existing boundaries and areas already approved for building*
- *Support provision of a small number of affordable homes built to the highest environment-friendly standards*
- *Improve drainage and sewerage systems in both villages*



Preparation of the Action Plan

Green energy and recycling

- *Long term project to investigate the pros and cons of installing a community wind turbine or other energy generating scheme to make the villages more self sufficient.*

Village appearance and maintenance

- *Set up community group to maintain village appearance and tackle projects such as restoring village signs, planting trees, caring for focal points such as the greens and War Memorial*
- *Resist all attempts to "urbanise" the villages*

Walking and Cycling for Recreation

- *Volunteers needed to research, design and publicise maps for walkers and cyclists and ensure all public rights of way are signed/marked on the ground and mapped*

Leisure and interest groups

- *Volunteers to be encouraged to set up new groups – photography/natural world/film/dance clubs featured regularly in residents' wish lists – and make better use of the Village Hall*

Recreational facilities for children and young people

- *Group to be established to explore options with local landowners, funding bodies, local authorities, et al for an outdoor play area to be created in Claxton*
- *Group also to explore gaining access to the school playing field in Sand Hutton at weekends and during school holidays*

Services and support for elderly people

- *Initiative needed to improve community awareness of older people's need for social involvement, transport and other practical help*

General/community development

- *Popular demand for pubs, shops, etc unlikely to be met but an annual event for all residents could be an option if there are sufficient volunteers to organise it! eg. a Barn Dance, Barbecue or Fun Day*

IT and Communications

- *Village website to facilitate messaging, recycling, "swaps", car sharing, baby sitting offers, etc and provide range of information including important contacts, activities and services available in the villages*

Promoting Local Businesses

- *Information leaflet to be published, available in paper format and on village website, giving contact details, opening times, range of service provided, as appropriate*

Heritage Protection and Preservation

- *A heritage trail is to be created with explanatory signs, leaflets and maps to include the history of the narrow gauge railway, Sand Hutton Hall, the ruins of St. Leonard's church, the Claxton chapels*



Action Plan

The following table gives a summary of the action we hope will be undertaken as a result of the ideas proposed during the consultation process for the plan. It indicates who is expected to be involved in the implementation of each proposal, the priority and degree of urgency each should be accorded and, where relevant, details of progress to date. In some cases, projects have already been initiated and their leaders' names appear in the plan. If you are interested in these or any of the other initiatives, please contact a member of the working group or Parish Council. Where action is to be led by the Parish Council it is highlighted in the table.

The action plan will be revisited regularly by the Parish Council to ensure that proposals stay on track as far as possible. Where we have control of activities ourselves, as residents of the parish giving our support voluntarily, we can probably expect more definite progress than in those areas where we are at the mercy of the local authorities. We hope they will be supportive and constructive in their responses to residents' clearly stated wishes for action in a number of very important areas, especially that of road safety, but we will have to wait and see what happens on those projects where their input is essential.



Action Plan

Action	Partner	Priority	Timescale	Progress To date
Road safety and speeding traffic – find effective measures to remind drivers of existing speed limits and encourage compliance without installing “urban” measures such as speed humps	North Yorkshire and Ryedale Highways departments Parish Council Residents to set example and drive/park safely, within the rules at all times	Immediate action, as soon as agreement and funding achieved	Within the next twelve months	Discussion with highways representatives but no progress
Transport – retain and improve bus service to and from existing destinations and add some new, eg. Monks Cross	Parish Council Hutchinsons bus company	Ongoing need	As soon as possible	
Transport – negotiate safe bike storage at CSL, A64 bus stop	Parish Council, CSL	Immediate	Within next 6 months	
Paths for pedestrians and cyclists, especially to provide an off-road link between Claxton and Sand Hutton	Parish Council, NY/Ryedale highways departments, local MP and councillors; Explore provision of a permissive path with the Thompsons of Ings Farm and the Church Commissioners	Urgent	Decision to be reached in next twelve months	Ongoing dialogue with relevant bodies but little evidence of progress – we haven’t had a fatal accident to give us enough “points” for consideration!
Building Development – restrict to existing boundaries and areas already approved for building; support provision of a small number of affordable homes built to the highest environment-friendly standards	Ryedale DC Planning Department, Parish Council, District and County Councillors	Ongoing	Principles to be applied at all times	Parish Council always vigilant and local councillors involved as required

Action Plan

Action	Partner	Priority	Timescale	Progress To date
Building development – drainage and sewerage systems	County and district Councils plus relevant “water boards” and landowners	Urgent	Immediate action required to prevent flooding in homes, gardens and thoroughfares	Parish Council has a permanent dialogue with relevant authorities!
Green energy and recycling – interest in options to make the villages more self sufficient in the generation of power	Community to find experts in the field and look at options such as wind turbines; later involvement with planners, engineers, et al	Low	Long term project, depending on degree of interest shown by residents	
Village appearance and maintenance – restore village signs, plant trees, care for focal points such as the greens and War Memorial	Residents and Parish Council A team of people willing to get out regularly to tidy up the villages would be beneficial	High	Immediate, with constant concern to keep the rural qualities of the villages	Several people actively care for the look of the villages and focal points; need is for a more concerted effort to prevent the burden falling on the few
Walking and cycling for recreation – research, design and publicise maps for walkers and cyclists, with ROW signed/ mapped	Voluntary group of residents with Parish Council support and help from local authorities as necessary	Medium	Within twelve months	Embryonic group already formed to pursue this task (Sue Sessions)
Leisure and interest groups – volunteers needed to set up new groups and make better use of the Village Hall	Residents with interest in popular topics such as photography, natural world, film and dance Village Hall committee	Medium	Whenever groups wish to form	Models already exist of what can be achieved when residents put their minds to the task – groups for singing, gardening, reading, bowling, etc already flourish
Recreational facilities for children and young people with emphasis on the provision of outdoor play areas in both villages	Residents, including children and parents; Parish Council; Sand Hutton school; NY education department; local landowners; Playing Fields Association	High	Progress to be seen within the next twelve months	It is hoped that discussions will take place soon with the newly appointed head teacher at Sand Hutton school regarding use of the school field at weekends and during school holidays (Jo Wheldon)

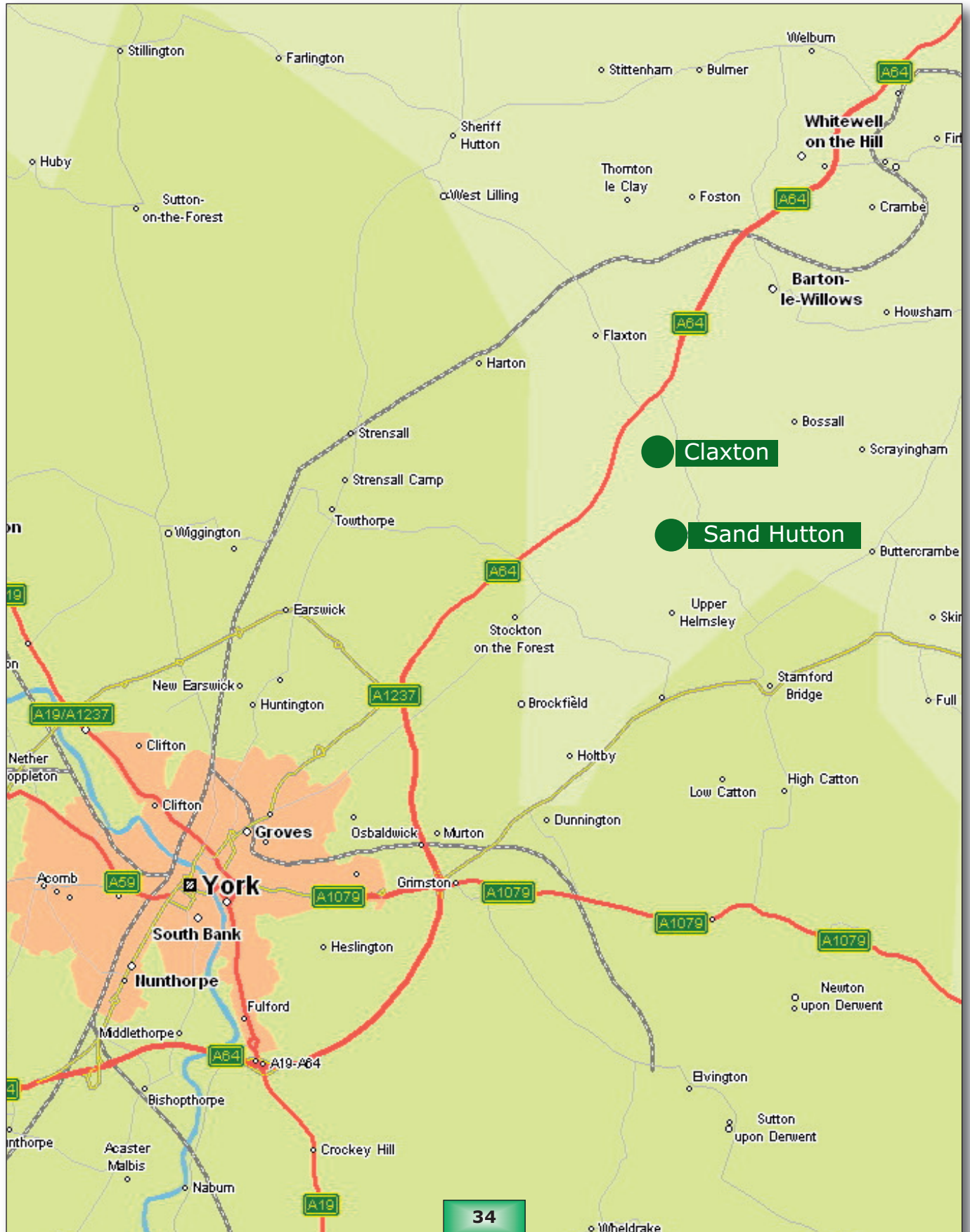
Action Plan

Action	Partner	Priority	Timescale	Progress To date
Services and support for older people	Residents and local services for health and social care	Ongoing	Vigilance at all times to ensure older residents receive the support they require to remain and enjoy being involved in the community	The monthly lunch club for older residents is an excellent example of the community working together
IT and communications – village website to facilitate recycling, “swaps”, messaging, car sharing, baby sitting offers, etc and provide range of information including important contacts, activities and services available locally	Residents with the equipment and expertise to design, update, maintain and support the site	Medium	Within the next twelve to eighteen months	There is scope to build on the existing community email and a volunteer with web design expertise has come forward with an offer to help set up a website for the village (Bill Heath and Andrew Fawcett)
Promoting local businesses – information leaflet to be published and featured on the website (see above)	Resident volunteer plus providers of services and businesses in the villages	Medium	Information to be available in the next six months and updated on a regular basis	Basic sheet produced during the parish planning process to be augmented (Mike Rickleton)
Heritage protection and preservation – a heritage trail is to be created with explanatory signs, leaflets and maps; details to be published on the website (see above)	Resident volunteers with support of local authority planners, ROW officers, archivists, etc; funding bodies	Medium	Project to be tackled over the next twelve months	Active group already formed and putting forward ideas for action (Anne White)
General community development – no facilities such as pubs or shops in the villages so the plan is to get together for an annual party!	Resident volunteers	High	Need to go for it this year!	A barbecue on Claxton Green on Midsummer’s Day has been suggested

Claxton & Sand Hutton

Parish Plan 2008

Location Map



Acknowledgements

Parish Plan Working Group

Helen Wood
Viv Tidball
Bill Heath
Anne White
Jo Wheldon
Mike Rickleton
Sue Sessions
Joy Pearce
John Edmonds

John Thompson, Clerk to the Parish Council

Yorkshire Rural Community Council
Maggie Farey
Amy Thomas

North Yorkshire County Council
Clare Wood

We are grateful to the authors of the Claxton & Sand Hutton Millennium publication "Reflections" for allowing us to use extracts from their book.
If anyone would like a copy, please contact Bill Heath 468429

The majority of the photographs used to illustrate this publication are those taken by entrants in the Parish Plan Photographic Competition. We are very grateful to all the young people who took part and created such an excellent record of village life

Other photographs and the design of this publication are by Bill Heath without whose expertise and enthusiasm we could not have produced such a high quality piece of work. He has been responsible for the consistently professional look of all the posters, newsletters and questionnaires used throughout the parish planning process

Claxton & Sand Hutton

Parish Plan 2008

